

LANDSCAPE DEVELOPMENT APPLICATION NOTES FOR 473-481 LIVERPOOL ROAD, STRATHFIELD:

REFER TO PROPOSED PLANT SCHEDULE FOR NOMINATED SPECIES. QUANTITIES AND EXACT LOCATIONS WILL BE DETERMINED AT CC DOCUMENTATION PHASE.

SOIL TESTING WILL BE REQUIRED BEFORE DETERMINATION OF USE OF EXISTING (PREFERRED) OR IMPORTED SOIL. AND SUBSEQUENT SOIL/CONDITIONER AND MULCH TYPE IS TO BE SPECIFIED AND USED - AND THEIR QUANTITIES AND APPLICATIONS AS OUTLINED IN THE SPECIFICATION.

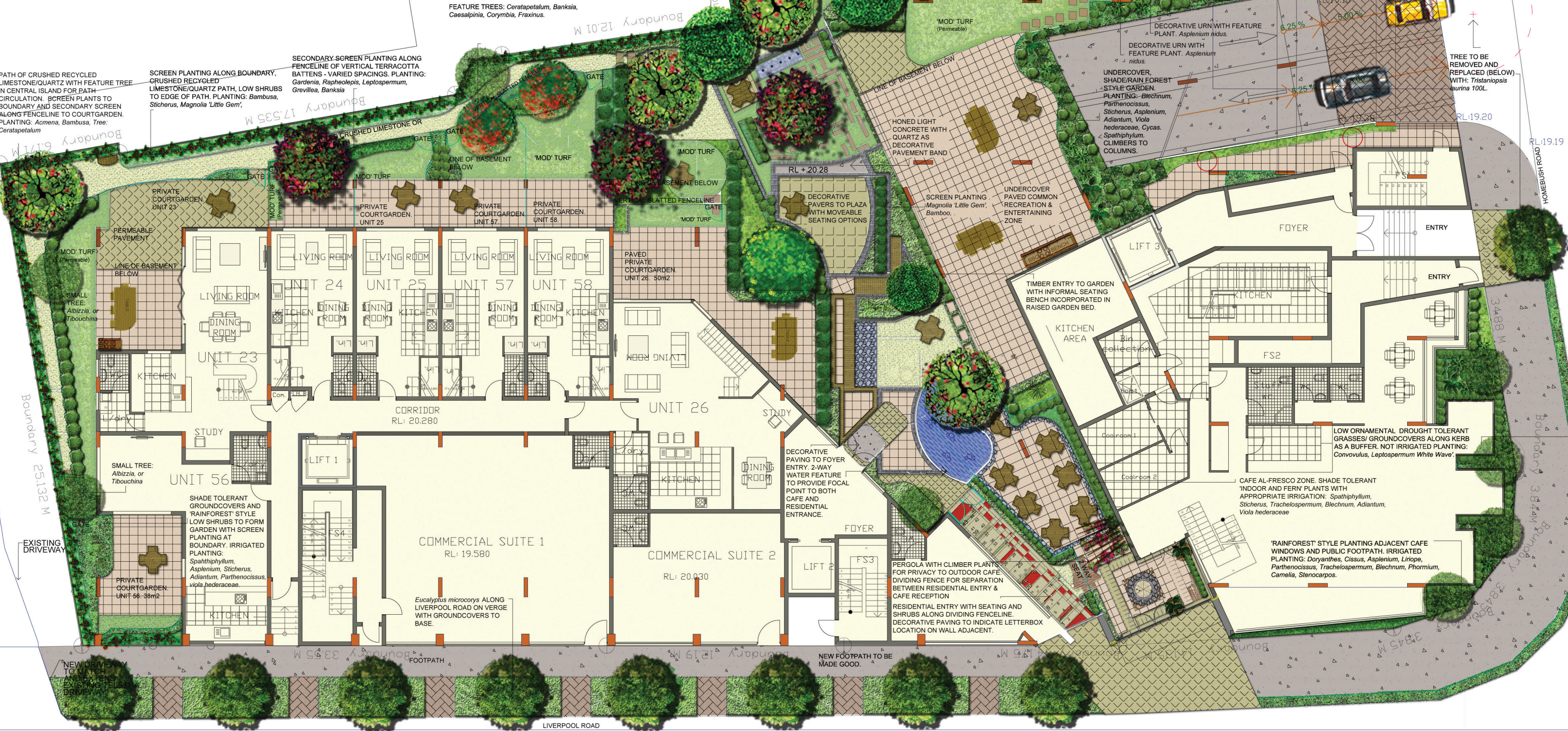
SOIL SAMPLES (4) SHALL BE TAKEN BY PROJECT MANAGER AND LANDSCAPE CONTRACTOR ON COMMENCEMENT OF LANDSCAPE WORKS. EACH SAMPLE TO BE TAKEN IN LOCATIONS WHERE IN PLANTING SHALL OCCUR AND BE APPROXIMATELY EVENLY SPREAD ACROSS SITE. ADDITIONAL SOIL SAMPLES SHALL BE TAKEN WHERE SUSPICION OF CONTAMINATION OR GROUND DISTURBANCE HAS OCCURRED (SUCH AS BUILDING RUBBLE). SAMPLES SHALL BE CORRECTLY STORED, LABELLED, AND RETAINED FOR AT LEAST 7 YEARS AFTER THE WORKS COMPLETION CERTIFICATE HAS BEEN ISSUED.

REFER TO SESL AUSTRALIA WEBSITE FOR INFORMATION ON HOW TO TAKE SOIL SAMPLES. SOIL TESTING SHALL OCCUR PRIOR TO COMMENCEMENT OF LANDSCAPE WORKS TO DETERMINE BEST PRACTICE METHODS AND APPROPRIATE USE OF EXISTING SITE SOIL, SOIL CONDITIONING, FERTILISING AND MULCHING APPLICATIONS. ADHERENCE TO THE LANDSCAPE SPECIFICATION MUST BE DONE BY THE LANDSCAPE CONTRACTOR.

THE PLANTING ESTABLISHMENT PERIOD IS FOR NO LESS THAN 12 MONTHS AND AS SPECIFIED AT CC STAGE BY THE LANDSCAPE ARCHITECT.

COMMON LANDSCAPE AREAS SHALL BE MAINTAINED BY A STRATA SUITABLY APPOINTED LANDSCAPE MAINTENANCE CONTRACTOR. BALCONY AND PRIVATE GARDENS SHALL BE MAINTAINED TO ALLOW THE DESIGN INTENT TO BE CARRIED THROUGH AND SHALL BE THE RESPONSIBILITY OF THE UNIT OWNER. SHOULD FAILURE TO MAINTAIN OCCUR, STRATA BY-LAW SHALL BE EXECUTED TO ALLOW STRATA MAINTENANCE OF PRIVATE GARDENS (COSTS BORNE BY THE UNIT OWNER THROUGH AND ADMINISTERED BY THE STRATA). DETAILS OF WHICH SHALL BE OUTLINED IN THE LANDSCAPE MAINTENANCE PLAN (AT DOCUMENTATION PHASE) BY THE LANDSCAPE ARCHITECT.

STREET TREE STOCK SELECTION TO BE SIGNED OFF AND MAINTAINED BY COUNCIL.



© 2012 Elke Haegel Landscape Architects A.B.N. 32828038804 All rights reserved. This drawing is copyright and shall not be reproduced or copied in any form or by any means (graphic, electronic or mechanical including photocopy) without the written permission of Elke Haegel Landscape Architects. Any license, expressed or implied, to use this document for any purpose whatsoever is restricted to the terms of the written agreement between Elke Haegel Landscape Architects and the instructing party.

The contractor shall check and verify all work on site (including work by others) before commencing the landscape installation. Any discrepancies are to be reported to the Project Manager or Landscape Architect prior to commencing work. Do not scale this drawing. Any required dimensions not shown must be referred to the Landscape Architect for confirmation. The Contractor must not construct from this drawing unless it is marked 'Issue for Construction'. The Contractor acknowledges this drawing may be one of a number of drawings which together document the landscape design and works.

Issue	Revision Description	Drawn	Check	Date
B	Development Application	EDH	EDH	28.11.12
A	Development Application	EDH	EDH	14.09.12

**LEGEND**

- Existing tree to be retained (Refer survey and landscape spec)
- Existing tree to be removed (Refer survey/landscape spec)
- Proposed trees (Refer to Plant Schedule)
- Screen Planting & Shrubs (Refer Plant Schedule)
- 'Mod' Turf - i.e.) Artificial (Permeable)
- Proposed low shrub Planting (Refer to plant schedule)
- Proposed Groundcovers (Refer Plant Schedule)
- Climbers & Screen Plants Fenceline
- Accent/Feature Plants & Pots (Refer Plant Schedule)
- Furniture (indicative) Bench seating
- Crushed recycled quartz / limestone
- Decking / Permeable Paving Type E
- Paving types A and B
- Paving types C and D
- Stepping Stone Pavers

**PROJECT TEAM:**

**bhi**

**MEINHARDT CITY PLAN SERVICES**

**HAEGE**

LANDSCAPE ARCHITECTS

2117 Kallit St. Kings Cross, NSW 2011

ph: 0410 456 404

www.elkehaegel.com.au

**DEVELOPMENT APPLICATION**

Client: Anne Bechara

Architect: BHI Architects - Sydney - Richard Mann

Project: 473-481 Liverpool Rd, Strathfield Unit Development

Drawing Name: Landscape Ground Floor Plan

Level 1

Plan 1 (ground) of 7 Levels + Details Sheets (A3 size)

Scale: 1:200 at A3

Scale bar: 0 1 2 3 5m

Drawn by: EDH

Approved: EDH

Job Number: 1209\_b

Drawing Number: L\_101

Issue: B